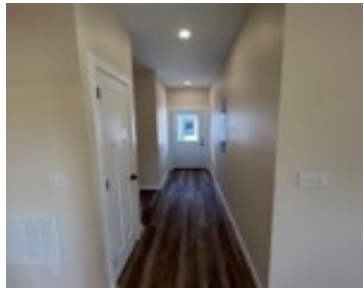


11490 HIGHWAY 24, MADISON, MO, 65263

<https://fretwellland.com>

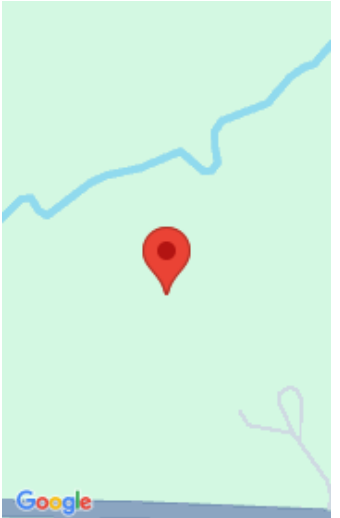
11490 Highway 24,
Madison, MO,
65263



Escape to peaceful country living with this new construction on 7 acres just 15 minutes from Moberly! This charming new construction home sits on 7 acres featuring 3 bedrooms, 2 bathrooms, and a detached garage. Offering the ideal blend of privacy and functionality, this property offers an open concept, along with a modern kitchen with ...

[Read more](#)

- 0 beds
- 0 baths
- Residential
- Single Family Residence
- Active



Call us now

Phone: 573-767-5436
Email: info@fretwellland.com



Building Details

Cooling features: Ceiling Fan(s), Central Air

Architectural Style:
Other

New Construction?: Yes

Heating: Electric

Exterior material: Attic/Crawl Hatchway(s) Insulated, Batts Insulation, Blown-In Insulation, Cedar, Concrete, Stone, Vinyl Siding

Amenities & Features

Waterfront Access?: No **Garage?:** Yes

Attached Garage?: No **Fireplace?:** No

Private Pool?: No **Utilities:** Electricity Connected, Sewer Connected, Water Connected

Nearby Schools

Elementary School: Madison Elem.

Middle School: Madison High

High School: Madison High

High School District: Madison C-3



Call us now

Phone: 573-767-5436

Email: info@fretwelland.com

