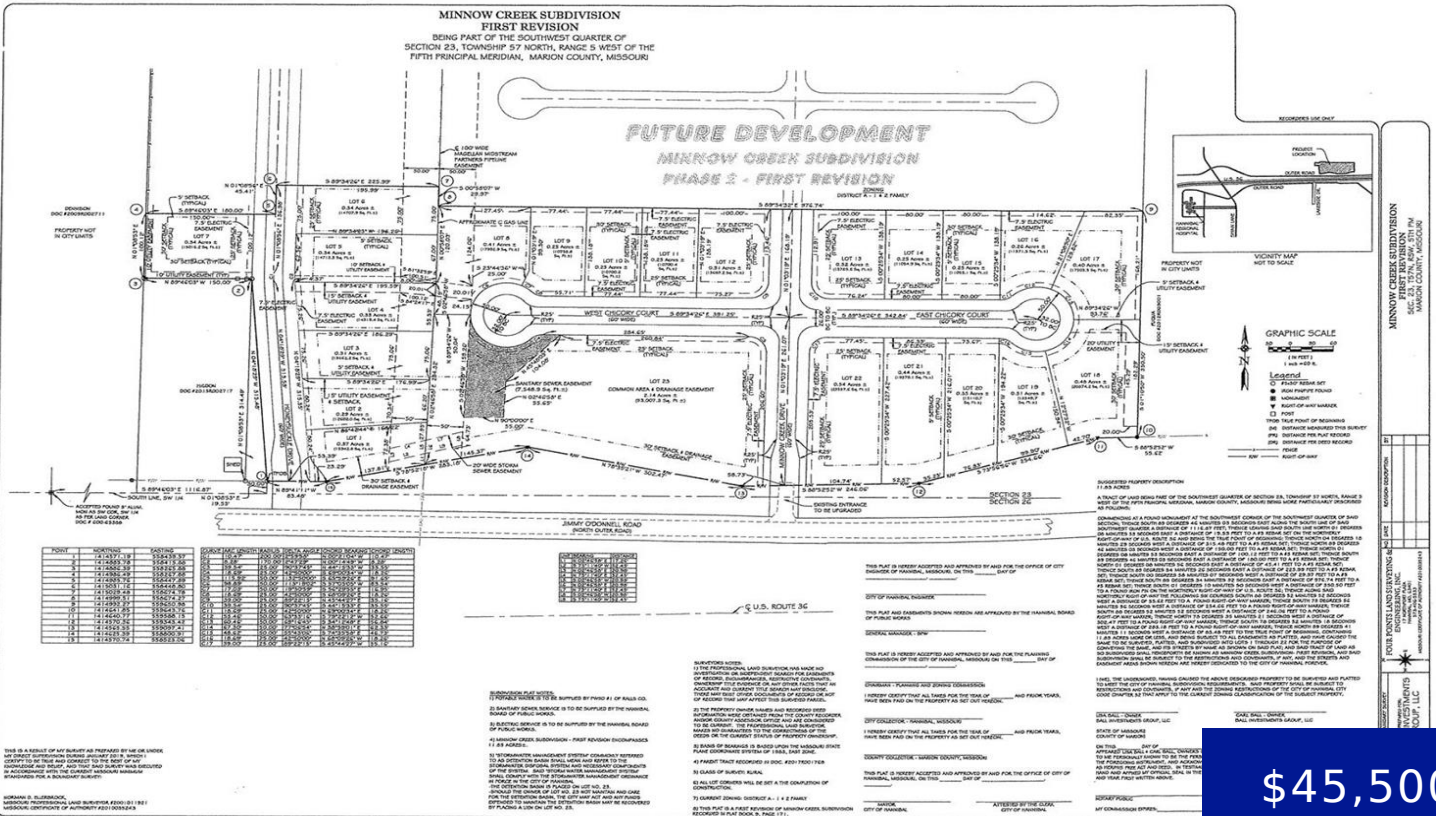


# 13, MINNOW CREEK SUBDIVISION, HANNIBAL, MARION, 63401

<https://fretwelland.com>

13, Minnow Creek Subdivision, Hannibal, Marion, 63401

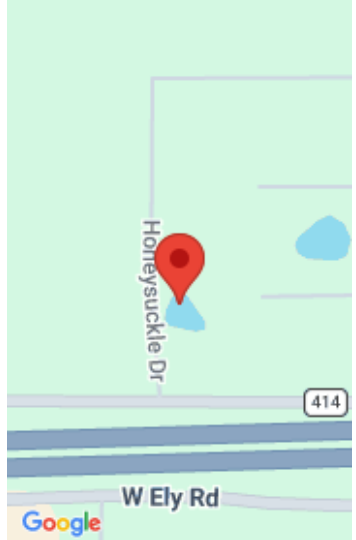


**\$45,500**

Minnow Creek proudly serves as one of Hannibal Missouri's newest and most promising subdivisions. Currently, This ideal location is in close proximity to Hannibal Regional Hospital, other medical facilities, industrial parks, businesses, schools, restaurants and shopping centers. The new subdivision is within the city limits of Hannibal which offers excellent fire and police protection. Sidewalks ...

[Read more](#)

- 0 beds
- 0 baths
- Land
- Active



**Call us now**

Phone: 573-767-5436  
Email: [info@fretwelland.com](mailto:info@fretwelland.com)



---

## Building Details

**New Construction?:** No

---

## Amenities & Features

**Waterfront Access?:** No

**Attached Garage?:** No

**Private Pool?:** No

**Utilities:** Underground Utilities, Electricity Available, Natural Gas Available

**Garage?:** No

**Fireplace?:** No

**Community Features:** Curbs, Sewer Gutters, Sidewalks, Storm Sewer, Street Lights

---

## Nearby Schools

**Elementary School:** Veterans Elem.

**High School:** Hannibal Sr. High

**Middle School:** Hannibal Middle

**High School District:** Hannibal 60



**Call us now**

Phone: 573-767-5436

Email: [info@fretwelland.com](mailto:info@fretwelland.com)

