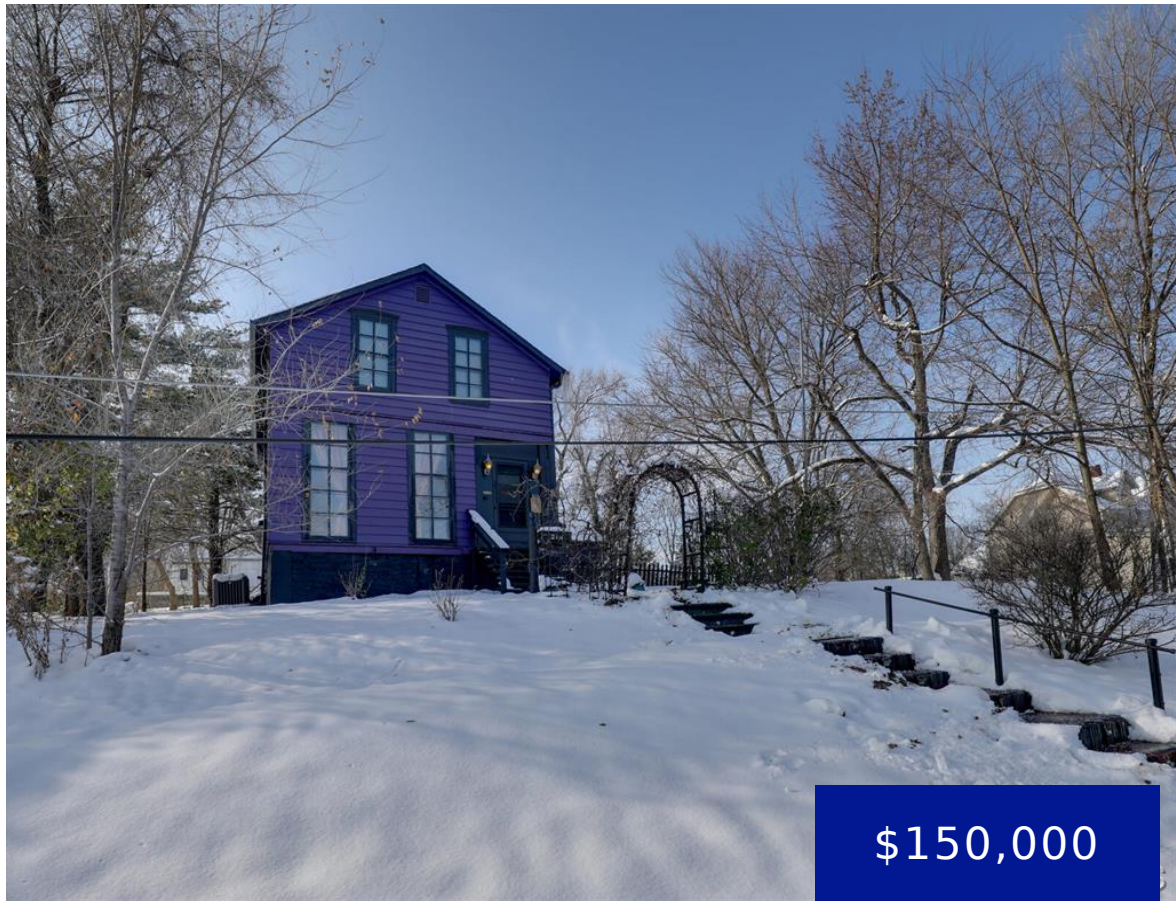


215 SUMMIT STREET, HANNIBAL, MO, 63401

https://fretwellland.com

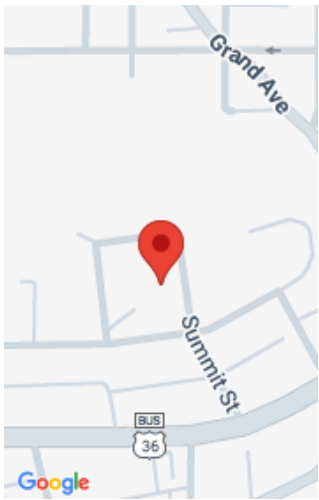
215 Summit Street,
Hannibal, MO,
63401



Welcome to the most whimsical, dreamy and ultra-moody home near Hannibal’s Historic Downtown District! This carefully designed three-bedroom home feels like you stepped right into a fairy tale. Walking in the front door you’ll be enchanted by the large dining room complete with a gas fireplace, tall ceilings and historic staircase. Moving through the dining ...

[Read more](#)

- 3 beds
- 1 bath
- Residential
- Single Family Residence
- Active
- 1675 sq ft



Call us now

Phone: 573-767-5436
Email: info@fretwellland.com



Rooms

Room type	Level
Dining Room	First
Kitchen	First
Living Room	First
Bathroom	First
Primary Bedroom	Second
Bedroom	Second
Bedroom 2	Second

Building Details

Cooling features: Central Air

New Construction?: No

Basement: Unfinished

Roof: Architectural Shingle

Architectural Style: Victorian

Heating: Forced Air

Exterior material: Steel Siding

Parking: Carriage House

Amenities & Features



Call us now

Phone: 573-767-5436
Email: info@fretwelland.com



Waterfront Access?: No

Attached Garage?: No

Private Pool?: No

Window Features: Drapes

Amenities: Free-Standing
Electric Range

Garage?: Yes

Fireplace?: Yes

Community Features: Street Lights

Utilities: Cable Available, Electricity Available, Sewer
Available

Features: Built-in Features, Crown Molding, Decorative,
Dining Room, Electric, High Ceilings, High Speed Internet,
Kitchen Island, Master Bedroom, Natural Woodwork, Pantry,
Shower, Tub, Vaulted Ceiling(s)

Nearby Schools

Elementary School: A. D. Stowell Elem.

High School: Hannibal Sr. High

Middle School: Hannibal Middle

High School District: Hannibal 60



Call us now

Phone: 573-767-5436

Email: info@fretwellland.com

