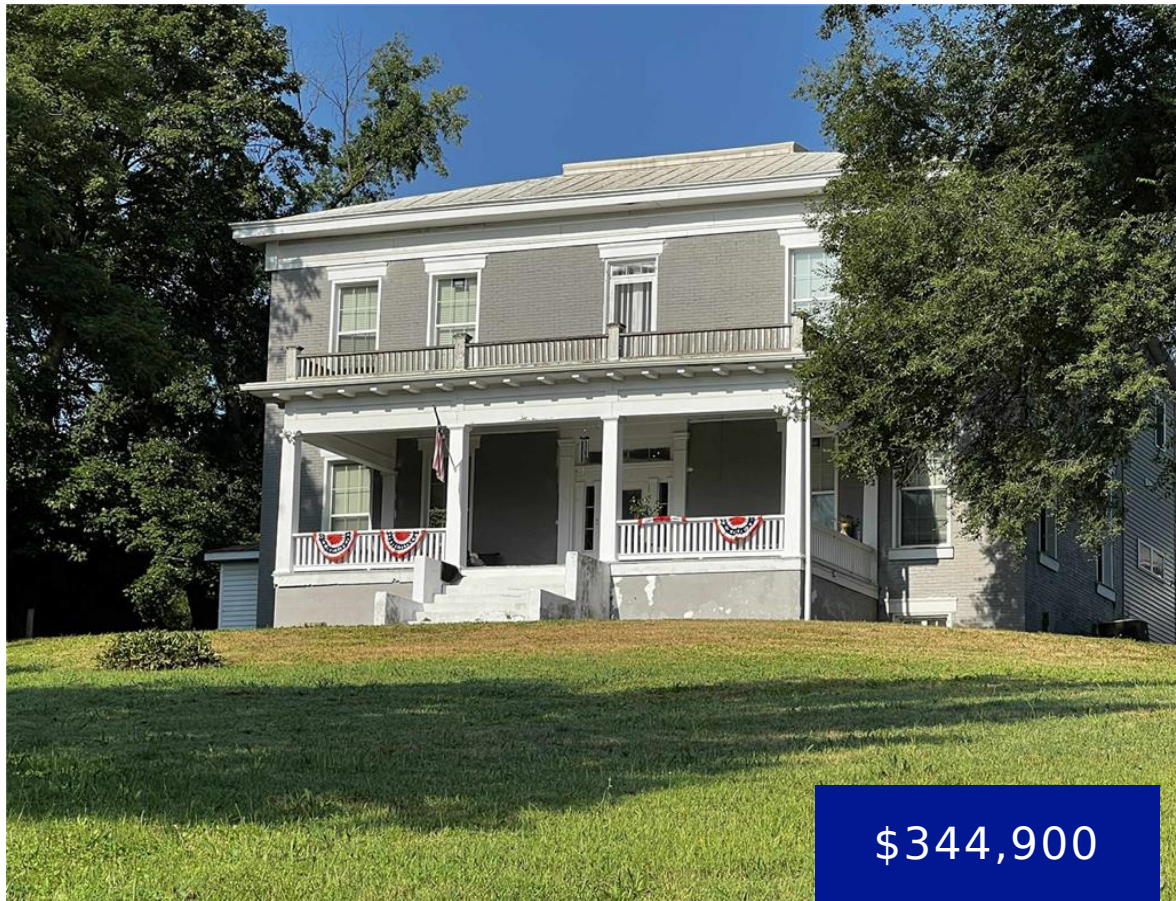


2742 HIGHWAY 61, PALMYRA, MO, 63461

<https://fretwellland.com>

2742 Highway 61,  
Palmyra, MO,  
63461

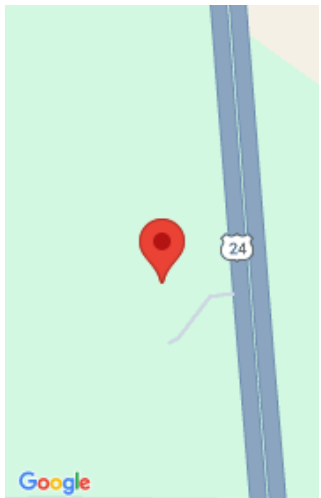


\$344,900



Nestled on +/-6.3 acres between Palmyra and Quincy, in Palmyra School District, this 3-bedroom, 3-bathroom brick two-story home offers the perfect blend of charm and country living. Outside, the property features a large white barn, an open-face outbuilding with 4 stalls, additional sheds, and plenty of space to spread out.

- 3 beds
- 2 baths
- Residential
- Single Family Residence
- Active
- 2738 sq ft



Call us now

Phone: 573-767-5436  
Email: [info@fretwellland.com](mailto:info@fretwellland.com)



---

## Building Details

**Cooling features:** Ceiling Fan(s), Central Air, Electric

**New Construction?:** No

**Exterior material:** Block, Brick, Concrete

**Architectural Style:** Other

**Heating:** Forced Air, Propane

**Roof:** Metal

---

## Amenities & Features

**Waterfront Access?:** No

**Attached Garage?:** No

**Private Pool?:** No

**Features:** Living Room, Master Bedroom, Wood Burning

**Garage?:** No

**Fireplace?:** Yes

**Utilities:** Electricity Connected, Propane, Water Connected

---

## Nearby Schools

**Elementary School:** Palmyra Elem.

**High School:** Palmyra High

**Middle School:** Palmyra Middle

**High School District:** Palmyra R-I



### Call us now

Phone: 573-767-5436

Email: [info@fretwellland.com](mailto:info@fretwellland.com)

