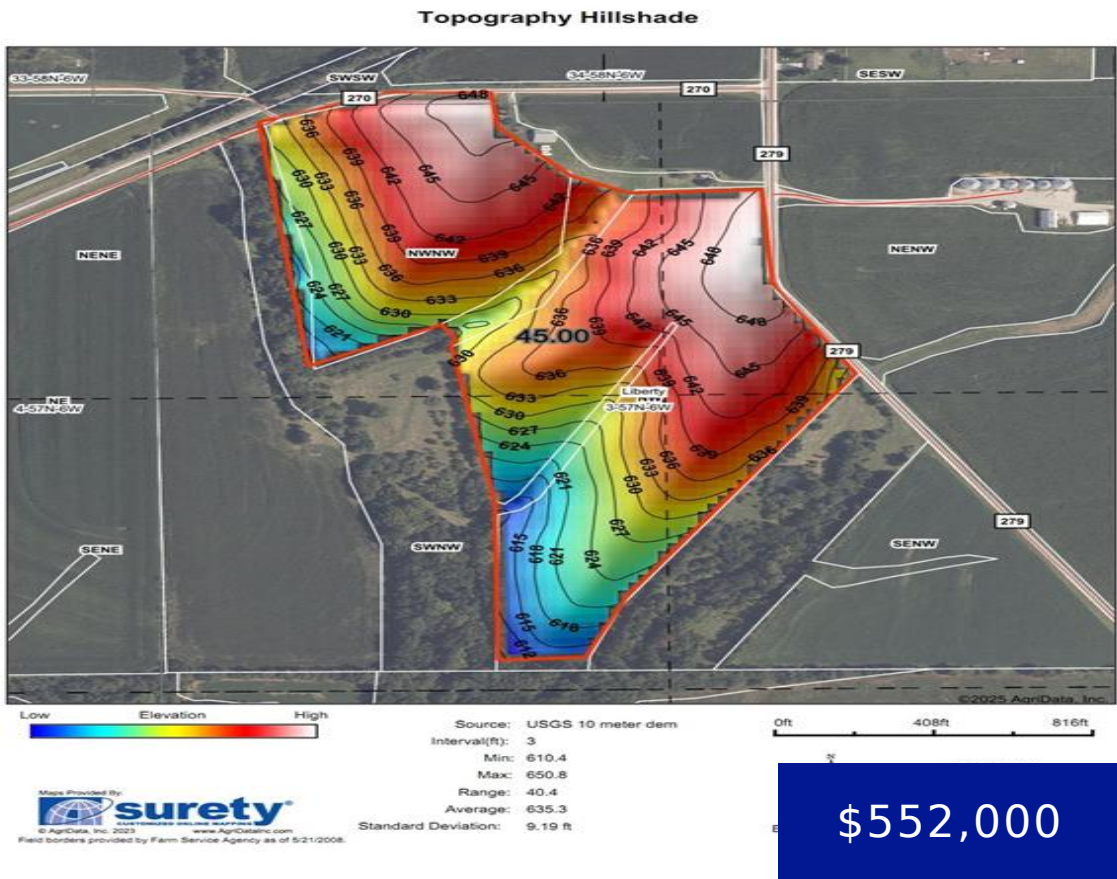


5 MARION RD 270 & 279, PALMYRA, MO, 63461

https://fretwellland.com

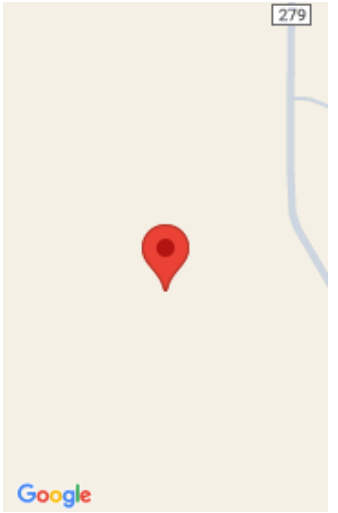
5 Marion Rd 270 &
279, Palmyra, MO,
63461



45 Acres of Prime Highly Tillable Farmland - Palmyra, Marion County, MO Located just 1 mile south of Palmyra on County Road 279 & 270, this 45-acre farm offers a rare opportunity in one of the most desirable agricultural areas around. With 42.13 highly productive tillable acres, this property is ideal for the serious row ...

[Read more](#)

- 0 beds
- 0 baths
- Farm
- Farm
- Active
- 0 sq ft



Call us now

Phone: 573-767-5436
Email: info@fretwellland.com



Building Details

New Construction?: No

Amenities & Features

Waterfront Access?: No

Attached Garage?: No

Private Pool?: No

Garage?: No

Fireplace?: No

Utilities: Sewer Not Connected

Nearby Schools

Elementary School: Palmyra Elem.

High School: Palmyra High

Middle School: Palmyra Middle

High School District: Palmyra R-I



Call us now

Phone: 573-767-5436

Email: info@fretwelland.com

