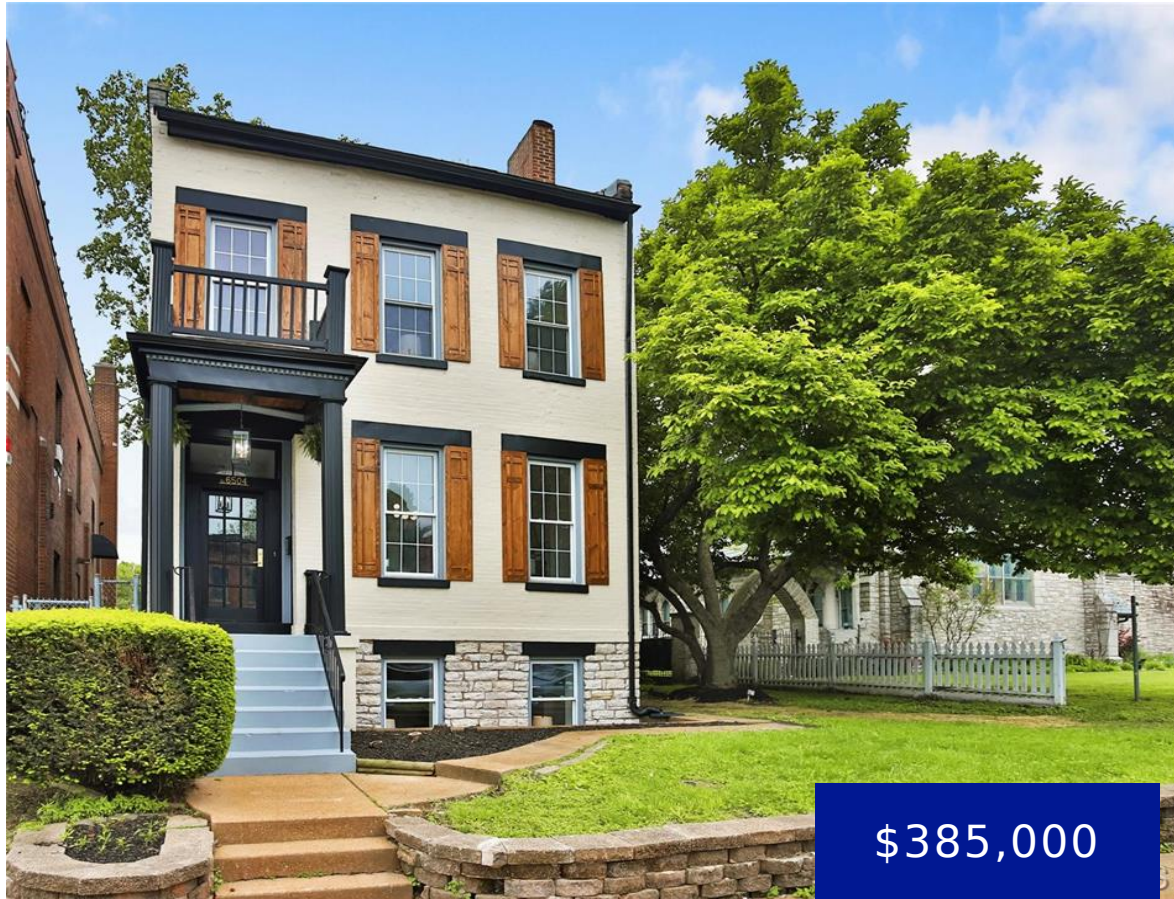


6504 MICHIGAN AVENUE, ST LOUIS, MO, 63111

<https://fretwellland.com>

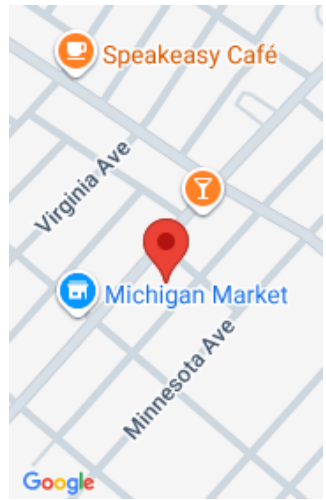
6504 Michigan Avenue, St Louis, MO, 63111



Welcome to this beautifully renovated 3-bedroom, 2.5-bath home where every detail has been carefully curated. The spacious layout includes a finished basement, high-end finishes, and both formal and casual living areas. Enjoy outdoor living year-round with two covered porches and a covered patio. The detached garage features an oversized loft—perfect for a home office, gym, ...

[Read more](#)

- 3 beds
- 2 baths
- Residential
- Single Family Residence
- Active
- 3000 sq ft



Call us now

Phone: 573-767-5436
Email: info@fretwellland.com



Building Details

Cooling features: Dual

ParkingTotal: 2

Heating: Dual Fuel/Off Peak, Natural Gas

Exterior material: Brick

Parking: Alley Access, Covered, Detached, Garage, Garage Door Opener

Architectural Style: Historic

New Construction?: No

Basement: 8 ft + Pour

Roof: Flat

Amenities & Features

Waterfront Access?: No

Attached Garage?: No

Private Pool?: No

Exterior Features: Balcony

Garage?: Yes

Fireplace?: Yes

Window Features: Insulated Windows

Amenities: Dishwasher, Disposal, Free-Standing Range, Gas Water Heater, Range, Range Hood, Refrigerator, Stainless Steel Appliance(s)

Features: Custom Cabinetry, Decorative, Dining Room, High Ceilings, Historic Millwork, Living Room, Separate Dining, Solid Surface Countertop(s), Special Millwork, Walk-in Closet(s)

Nearby Schools

Elementary School: Woodward Elem.

High School: Roosevelt High

Middle School: Lyon-Blow Middle

High School District: St. Louis City



Call us now

Phone: 573-767-5436

Email: info@fretwelland.com

