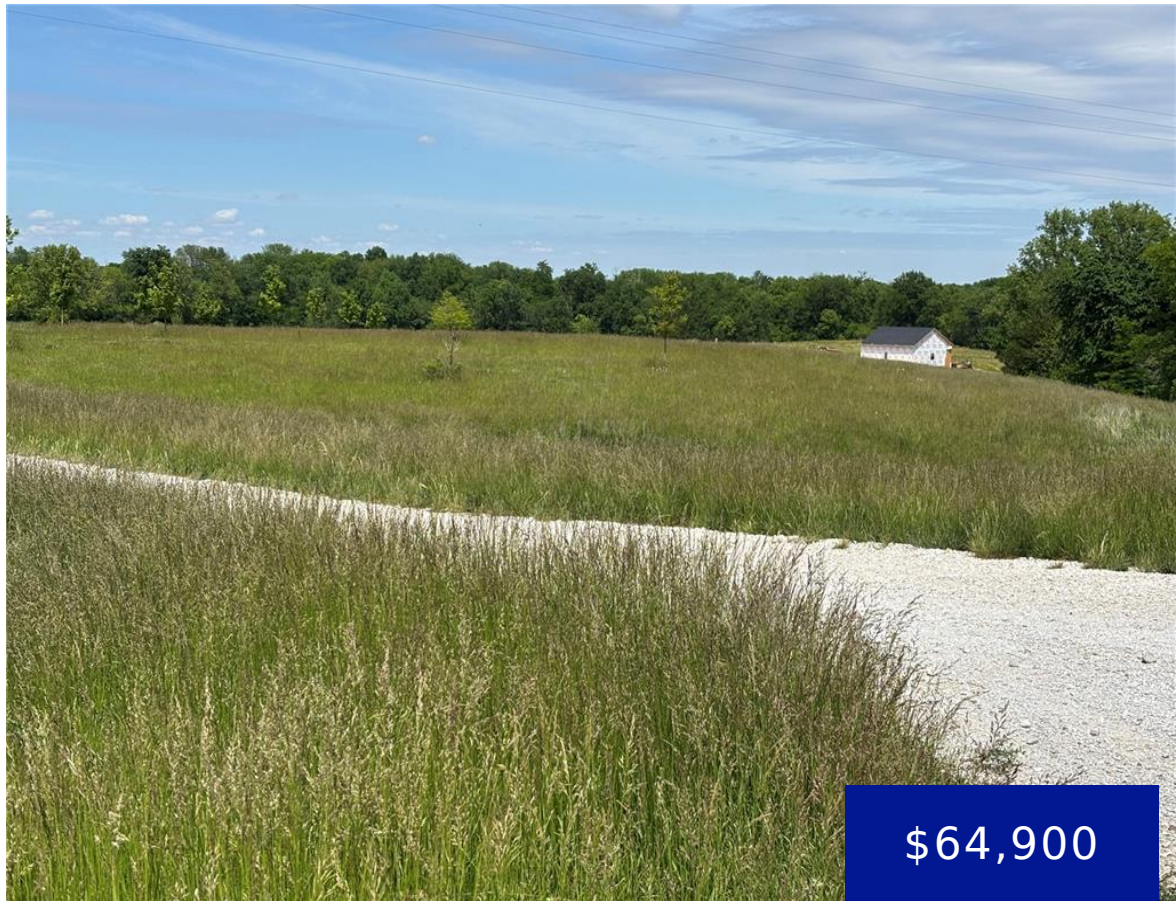


7788 HIGHWAY 168, PALMYRA, MO, 63461

https://fretwellland.com

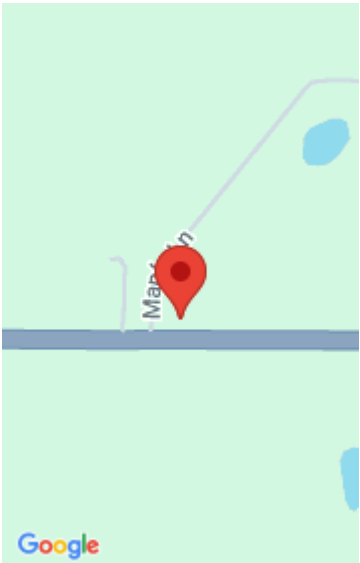
7788 Highway 168,
Palmyra, MO,
63461



Prime 3-Acre Tract on Hwy 168 - Palmyra, MO Discover the perfect blend of convenience and countryside charm with this beautiful 3-acre parcel located just off Highway 168 in Palmyra, Missouri. Offering level to gently rolling terrain, this property is ideal for building your dream home, establishing a hobby farm, or investing in future development. ...

[Read more](#)

- 0 beds
- 0 baths
- Land
- Active



Call us now

Phone: 573-767-5436
Email: info@fretwellland.com



Building Details

New Construction?: No

Amenities & Features

Waterfront Access?: No

Garage?: No

Attached Garage?: No

Fireplace?: No

Private Pool?: No

Utilities: Cable Available, Electricity Available

Nearby Schools

Elementary School: Palmyra Elem.

Middle School: Palmyra Middle

High School: Palmyra High

High School District: Palmyra R-I



Call us now

Phone: 573-767-5436

Email: info@fretwelland.com

