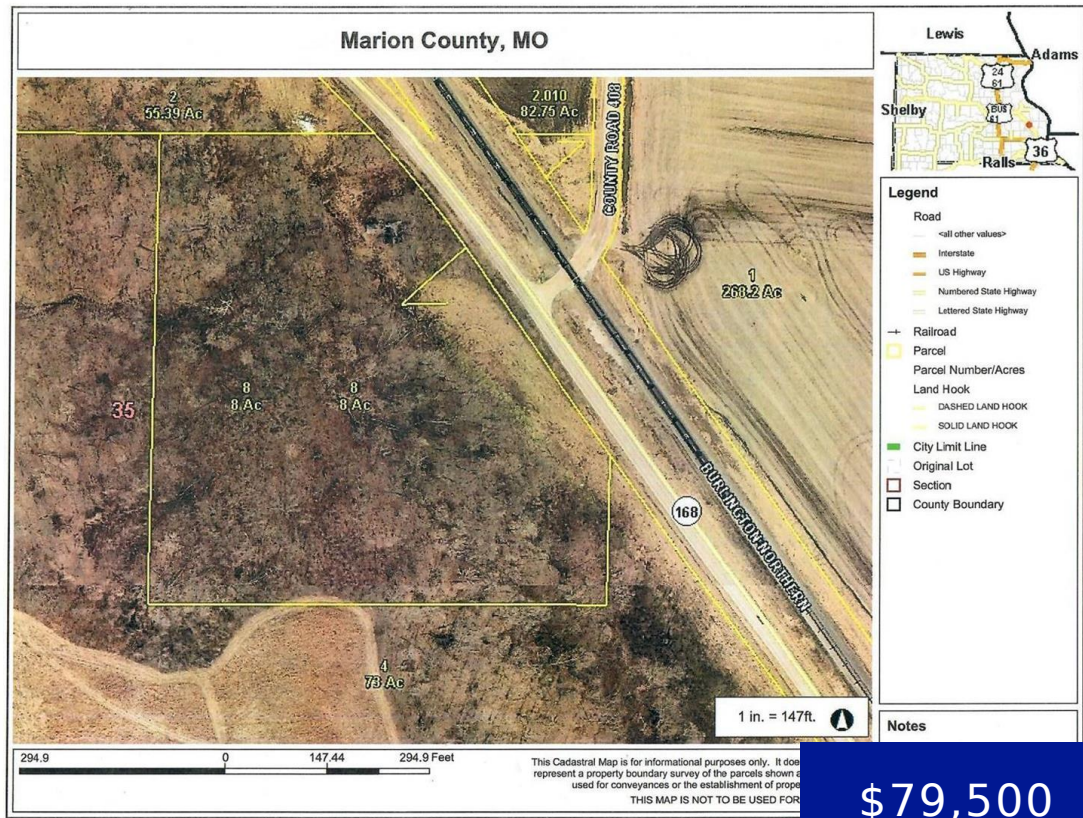


8951 HWY 168, HANNIBAL, MO, 63401

https://fretwellland.com

8951 Hwy 168,  
Hannibal, MO,  
63401



8 acres of unrestricted land on a hard surface road in Palmyra school district. The property has an old shed with a concrete floor and a existing root cellar. The property has access to county water with an existing well on the property. Unrestricted small acreage is hard to find in the area. Call and ...

[Read more](#)

- 0 beds
- 0 baths
- Land
- Active



Call us now

Phone: 573-767-5436

Email: [info@fretwellland.com](mailto:info@fretwellland.com)



---

## Building Details

**New Construction?:** No

---

## Amenities & Features

**Waterfront Access?:** No **Garage?:** No

**Attached Garage?:** No **Fireplace?:** No

**Private Pool?:** No **Utilities:** Sewer Not Available, Electricity Available

---

## Nearby Schools

**Elementary School:** Palmyra Elem.

**High School:** Palmyra High

**Middle School:** Palmyra Middle

**High School District:** Palmyra R-I



**Call us now**

Phone: 573-767-5436

Email: [info@fretwelland.com](mailto:info@fretwelland.com)

